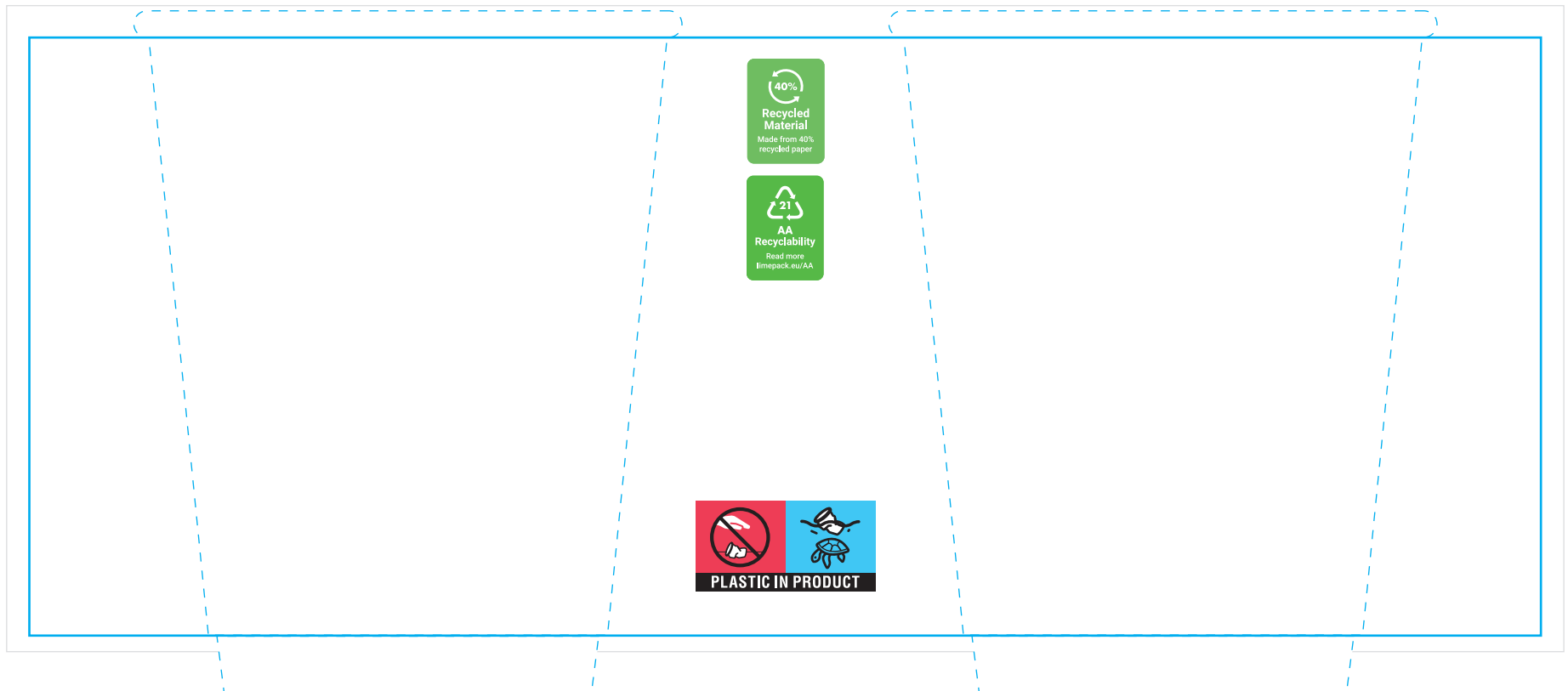


Front  
|Back  
|

Printable area



Cut line

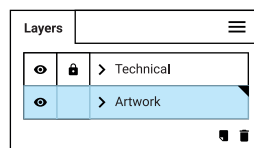


Cup illustration



Light print will look slightly darker when printing,  
due to the use of recycled paper.

- 1 Paste your vector design onto the **Artwork** layer.



- 2 Embed all files and setup your design.



- 3 Expand any fonts and click **Save**.  
Please **do not** remove any layers.

